

Woolly Thoughts

THE WORLD OF
ILLUSION KNITTING
where nothing is quite what it seems

Illusion Techniques & Samples



Illusion Windmills

*An illusion knitting sample for use as an afghan block or washcloth
designed by*

Steve Plummer & Pat Ashforth

Illusion Windmills

When you look directly at the knitting you will see four small striped squares with stripes going in different directions. When you look from an angle you will see windmills of pink and purple.

Yarn

You can use any thickness of smooth(ish) yarn. The illusion will show up however thick or thin the yarn. It may not show if you use a textured, or variegated, yarn. Your choice of yarn will affect the overall size of the square.

The square in the photos was made in DK yarn and used about 40 metres (45 yards) in each of the two colours.

Needles

The effect works best if the work is fairly tight. Try needles one size smaller than recommended for your chosen yarn.

Size and tension

These will vary according to the yarn you choose. Using DK yarn it will be approximately 22 cm (9") square.

Using the chart

This design is made in four sections which are joined as you go. There are 23 ridges (not rows!) in each small square. Ridges and stitches are marked, with red lines, in groups of ten. There are three colours on the chart but you are only using two colours of yarn. The thick red line is where you begin.

White on the chart always represents purl stitches. You could be using either colour of yarn to work these stitches. The working colour is determined by the colour of the current ridge. All other coloured stitches are knit stitches. Use Light to knit the light grey stitches; use Dark to knit the dark grey stitches.

You always work two rows (one ridge) of Dark followed by two rows (one ridge) of Light.

The sequence of working square is:

- Using Dark, knit
- Using Dark, follow the chart
- Using Light, knit
- Using Light, follow the chart

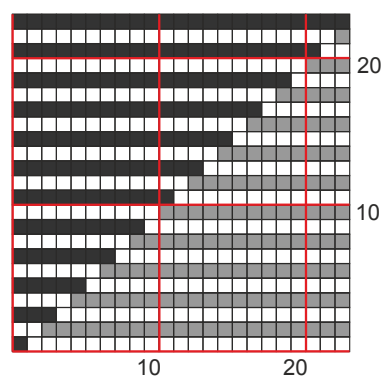
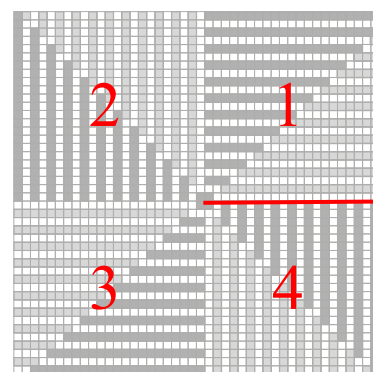
Each time you complete a sequence of four rows you have added two ridges.

Special notes

The right side of the work is always knit. The chart is only needed for wrong-side rows.

Note about other patterns

Our more complex patterns often have several pages of charts. They are given in various formats so you can choose which to use on paper, on your screen, or on a tablet or phone.



Illusion Windmills - Method

Square 1

A provisional cast-on is recommended. Cast on 23 stitches.

- Ridge 1* (Dark): Row 1: Knit.
Row 2: Follow the chart. Knit the coloured stitches and purl the white stitches.
(The chart shows k1, p22)
- Ridge 2* (Light): Row 1: Knit.
Row 2: Follow the chart. Knit the coloured stitches and purl the white stitches.
(The chart shows p2, k21)
- Ridge 3* (Dark): Row 1: Knit.
Row 2: Follow the chart. Knit the coloured stitches and purl the white stitches.
(The chart shows k3, p20)
- Ridge 4* (Light): Row 1: Knit.
Row 2: Follow the chart. Knit the coloured stitches and purl the white stitches.
(The chart shows p4, k19)

Follow the chart, casting off on the second row of ridge 23.

Square 2

With right side facing, turn the piece clockwise and, using Dark, pick one stitch from the end of each ridge (23 stitches). This counts as the first row of Ridge 1. Complete as for square 1.

Square 3

Pick up stitches along the edge of square 2 and complete as for square 1.

Square 4

Pick up stitches along the edge of square 3 and complete as for square 1.

Join the remaining edges. Remove the temporary cast on and .

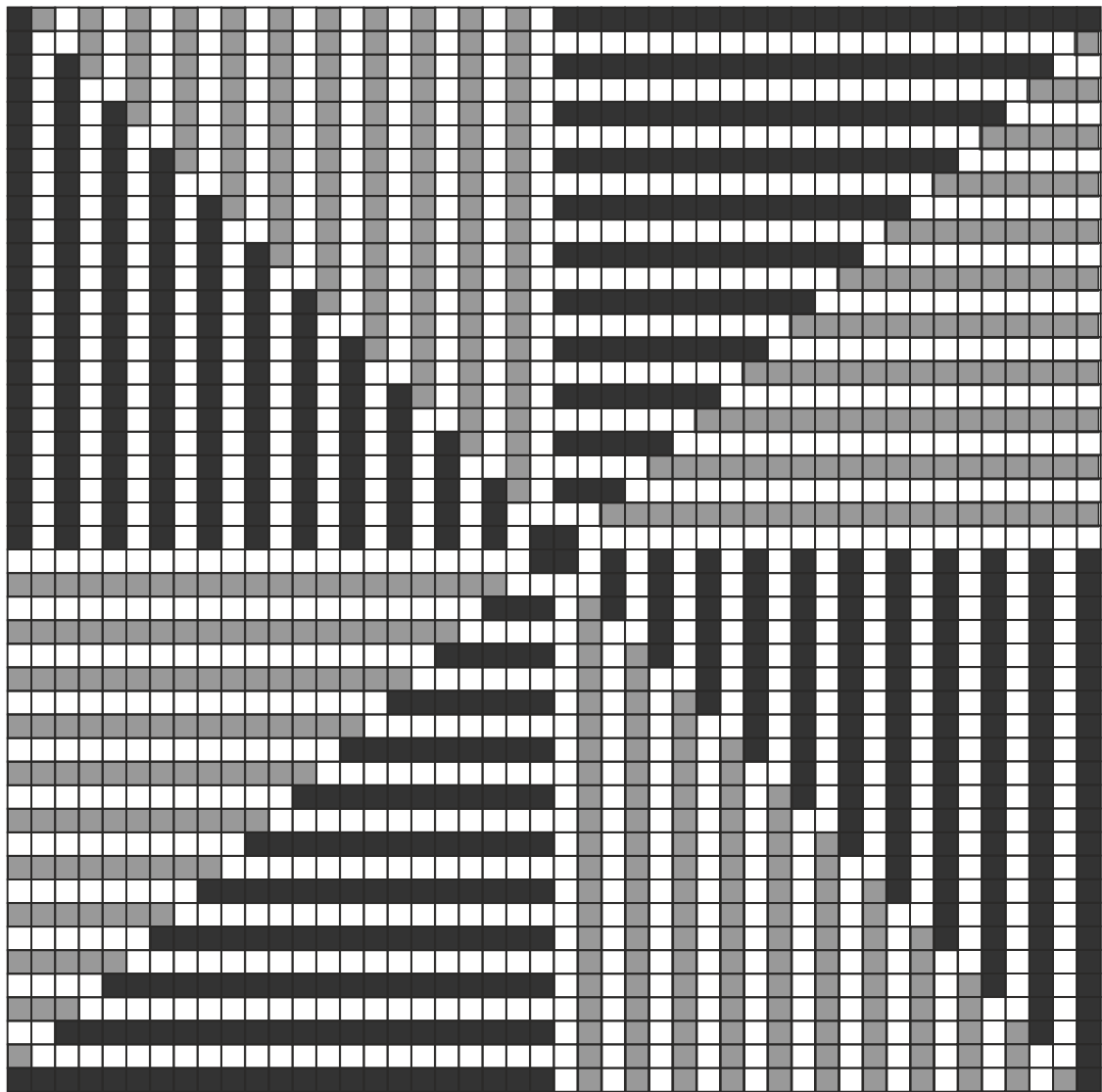
- either graft the live stitches to the ridge ends of square 4
- or hold the two pieces with right sides together and work through both pieces to bind off the live stitches

This is what you see when you look straight at the square. It is shown without a border

If you want to neaten the edges, work along one side at a time and pick up one stitch from the end of each ridge and one stitch from each cast-off stitch. Cast off loosely on the next row.

You can make the borders wider by adding extra rows of garter stitch.





©Steve Plummer & Pat Ashforth 2015

Woolly Thoughts

166 Keighley Road, Colne, Lancashire, BB8 0PJ, England

woollythoughts.com

All rights reserved