

Woolly Thoughts

THE WORLD OF
ILLUSION KNITTING
where nothing is quite what it seems

Illusion Techniques & Samples



Illusion Squares in Squares

*An illusion knitting sample for use as an afghan block or washcloth
designed by*

Steve Plummer & Pat Ashforth

Illusion Squares in Squares

This design uses the same two colours as *Directional Shadows* so they may look similar at first glance. When you look straight at the squares you see only narrow stripes, going in different directions. Looking from an angle reveals a smaller square inside each of the squares. Some of these squares are yellow and some are green. You will see different squares depending on where you stand. It is also different from *Directional Shadows* as the surround of each square appears to be a third colour that doesn't really exist.

The square could be used for an afghan block or a washcloth, or you can add on as many extra illusion squares as you want to create your own sweater or other garment.

Yarn

You can use any thickness of smooth(ish) yarn. The illusion will show up however thick or thin the yarn. It may not show if you use a textured, or variegated, yarn. Your choice of yarn will affect the overall size of the square.

The square in the photos was made in DK yarn and used about 40 metres (45 yards) in each of the two colours.

Needles

The effect works best if the work is fairly tight. Try needles one size smaller than recommended for your chosen yarn.

Size and tension

These will vary according to the yarn you choose. Using DK yarn it will be approximately 22 cm (9") square.

Using the chart

This design is made in four sections which are joined as you go. There are 23 ridges (not rows!) in each small square. Ridges and stitches are marked, with red lines, in groups of ten. There are three colours on the chart but you are only using two colours of yarn.

White on the chart always represents purl stitches. You could be using either colour of yarn to work these stitches. The working colour is determined by the colour of the current ridge. All other coloured stitches are knit stitches. Use Light to knit the light grey stitches; use Dark to knit the dark grey stitches.

You always work two rows (one ridge) of Dark followed by two rows (one ridge) of Light.

The sequence of working is:

- Using Dark, knit
- Using Dark, follow the chart
- Using Light, knit
- Using Light, follow the chart

Each time you complete a sequence of four rows you have added two ridges.

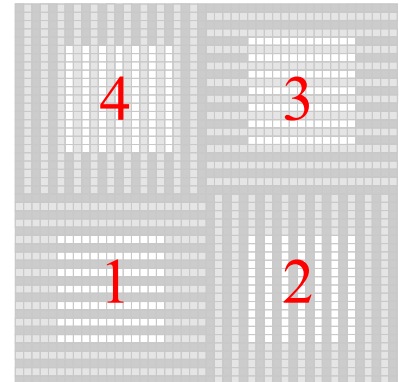
Special notes

The right side of the work is always knit. The chart is only needed for wrong-side rows.

Squares 1 and 2 are not the same as squares 3 and 4 even though they use the same sequence of colours.

Note about other patterns

Our more complex patterns often have several pages of charts. They are given in various formats so you can choose which to use on paper, on your screen, or on a tablet or phone.



The photo shows a 2 ridge border all round.

Illusion Squares in Squares - Method

To knit a single square (Square 1)

Using Dark cast on 23 stitches.

- Ridge 1* (Dark): Row 1: The cast on row counts as the first row of the first ridge.
Row 2: Follow the chart. (The chart shows all knit.)
- Ridge 2* (Light): Row 1: Knit.
Row 2: Follow the chart. (The chart shows all knit.)
- Ridge 3* (Dark): Row 1: Knit.
Row 2: Follow the chart. (The chart shows all knit.)
- Ridges 4 & 5:* Repeat ridges 2 and 3.
- Ridge 6* (Light): Row 1: Knit.
Row 2: Follow the chart. Knit the coloured stitches and purl the white stitches.
(The chart shows k5, p13, k5)
- Ridge 7* (Dark): As ridge 3.
- Ridges 8 - 19:* Repeat ridges 6 and 7 six times.
- Ridges 20 - 23:* Repeat ridges 2 and 3 twice. Keep the stitches on a holder.

To knit a group of 4 squares

Make Square 1.

Square 2

With right side facing turn Square 1 anti-clockwise and, using Dark, pick up one stitch from the end of each ridge (23 stitches). Count this as the first row of the first ridge. Work as for Square 1. Cast off.

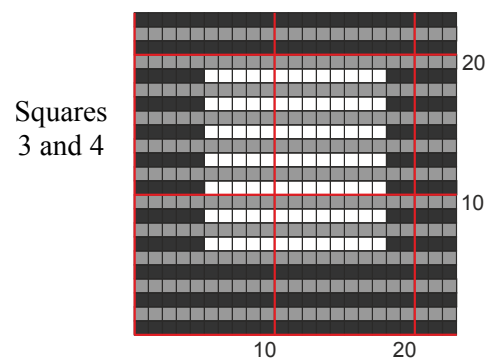
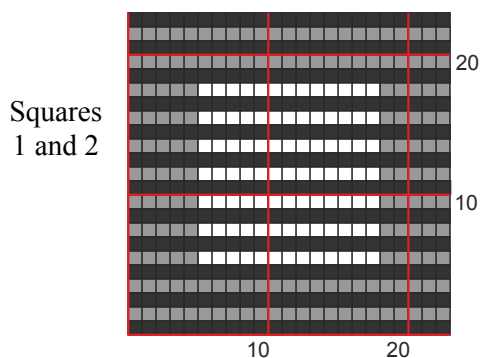
Square 3

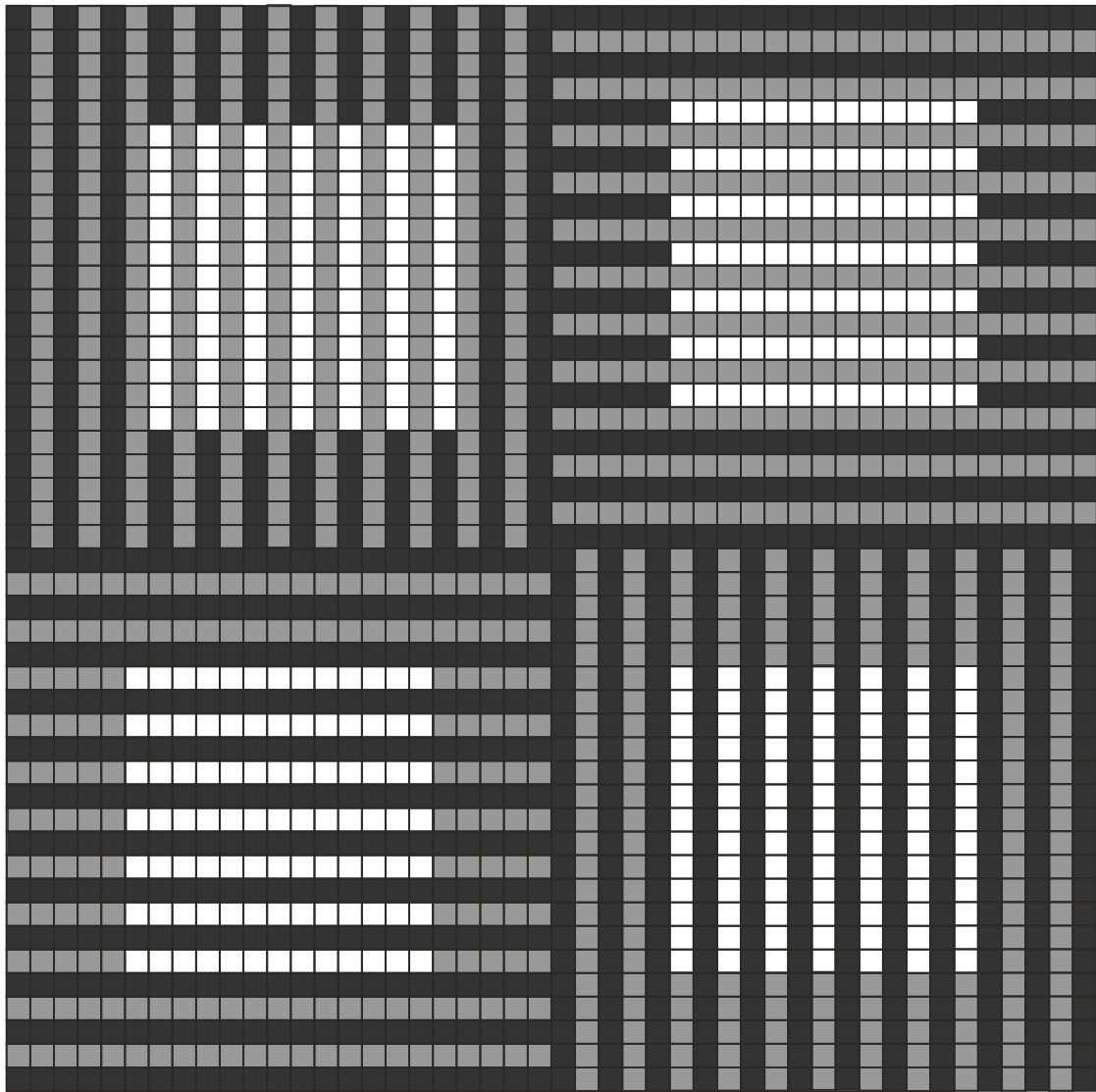
- Ridge 1* (Dark): Row 1: Turn work sideways (See diagram on page 1) and pick up one stitch from the end of each ridge of square 2 (23 stitches).
Row 2: Follow the chart. (The chart shows all knit.)
- Ridge 2 - 5:* Work as for square 1.
- Ridge 6* (Light): Row 1: Knit.
Row 2: Follow the chart. (The chart shows all knit.)
- Ridge 7* (Dark): Row 1: Knit.
Row 2: Follow the chart. Knit the coloured stitches and purl the white stitches.
(The chart shows k5, p13, k5)
- Ridges 8 - 19:* Repeat ridges 6 and 7 six times.
- Ridges 20 - 23:* Repeat ridges 2 and 3 twice, casting off on the last row.

Square 4

Work as for Square 3.

The remaining sides can be joined by stitching. Alternatively, place edges right sides together and, working through the ends of the ridges of square 4 and the live stitches of square 1, cast off. .





©Steve Plummer & Pat Ashforth 2015

Woolly Thoughts

166 Keighley Road, Colne, Lancashire, BB8 0PJ, England

woollythoughts.com

All rights reserved