

# Woolly Thoughts

THE WORLD OF  
**ILLUSION KNITTING**  
where nothing is quite what it seems

*Illusion Techniques & Samples*



## *Illusion Disappearing Colour*

*An illusion knitting sample for use as an afghan block or washcloth  
designed by*

*Steve Plummer & Pat Ashforth*

## *Illusion Disappearing Colour*

When you look from in front you will see definite wide stripes, in different colours, made up of narrow stripes. When you look from an angle you will see a solid background with four bright squares. The square could be used for an afghan block or a washcloth.

### **Yarn**

You can use any thickness of smooth(ish) yarn. The illusion will show up however thick or thin the yarn. It may not show if you use a textured, or variegated, yarn. Your choice of yarn will affect the overall size of the square. Unlike many illusions, there are three colours of yarn. They are referred to as Dark, Light and Third.

The square in the photos was made in DK yarn and used about

- 50 metres (55 yards) Dark = Burgundy
- 30 metres (33 yards) Light = White
- 20 metres (22 yards) Third = Yellow

### **Needles**

The effect works best if the work is fairly tight. Try needles one size smaller than recommended for your chosen yarn.

### **Size and tension**

These will vary according to the yarn you choose. Using DK yarn it will be approximately 25 cm (10") square.

### **Using the chart**

There are 50 ridges (not rows!). Ridges and stitches are marked, with red lines, in groups of ten so that you can keep your place on the chart. Use markers on your needle to correspond.

This chart is slightly different from most of our others because there are three colours of yarn. We have used the same system we use elsewhere so the chart does not show the colour change. Pay particular note to the written instructions to see where to change colour. Burgundy is shown as Dark throughout.

White on the chart always represents purl stitches. You could be using any colour of yarn to work these stitches. The working colour is determined by the colour of the current ridge. All other coloured stitches are knit stitches.

You always work two rows (one ridge) of Dark followed by two rows (one ridge) of Light (or Third).

The sequence of working is:

- Using Dark, knit
- Using Dark, follow the chart
- Using Light, knit
- Using Light, follow the chart

Each time you complete a sequence of four rows you have added two ridges.

### **Special note**

The right side of the work is always knit. The chart is only needed for wrong-side rows. When you look at the chart you are seeing the right side and need to work from left to right for wrong side rows.

### **Note about other patterns**

Our more complex patterns often have several pages of charts. They are given in various formats so you can choose which to use on paper, on your screen, or on a tablet or phone.

## *Illusion Disappearing Colour - Method*

Every stripe on the chart represents two rows of knitting. Every right side row is knit. You only need the chart for the wrong side rows.

Using Dark cast on 50 stitches.

*Ridge 1 (Dark):* Row 1: The cast on row counts as the first row of the first ridge.

Row 2: Follow the chart. The chart shows all knit.

*Ridge 2 (Light):* Row 1: Knit.

Row 2: Follow the chart. The chart shows all purl.

*Ridges 3 - 10:* Repeat ridges 1 and 2 four times.

*Ridge 11 (Dark):* Row 1: Knit.

Row 2: Follow the chart. Knit the coloured stitches and purl the white stitches.  
(The chart shows k10, p10, k10, p10, k10 )

*Ridge 12 (Third):* Row 1: Knit.

Row 2: Follow the chart. Knit the coloured stitches and purl the white stitches.  
(The chart shows p10, k10, p10, k10, p10)

*Ridges 13 - 20 :* Repeat ridges 11 and 12 four times.

*Ridges 21 - 30 :* Repeat ridges 1 and 2 five times.

*Ridges 31 - 40 :* Repeat ridges 11 and 12 five times.

*Ridges 41 - 50 :* Repeat ridges 1 and 2 five times.

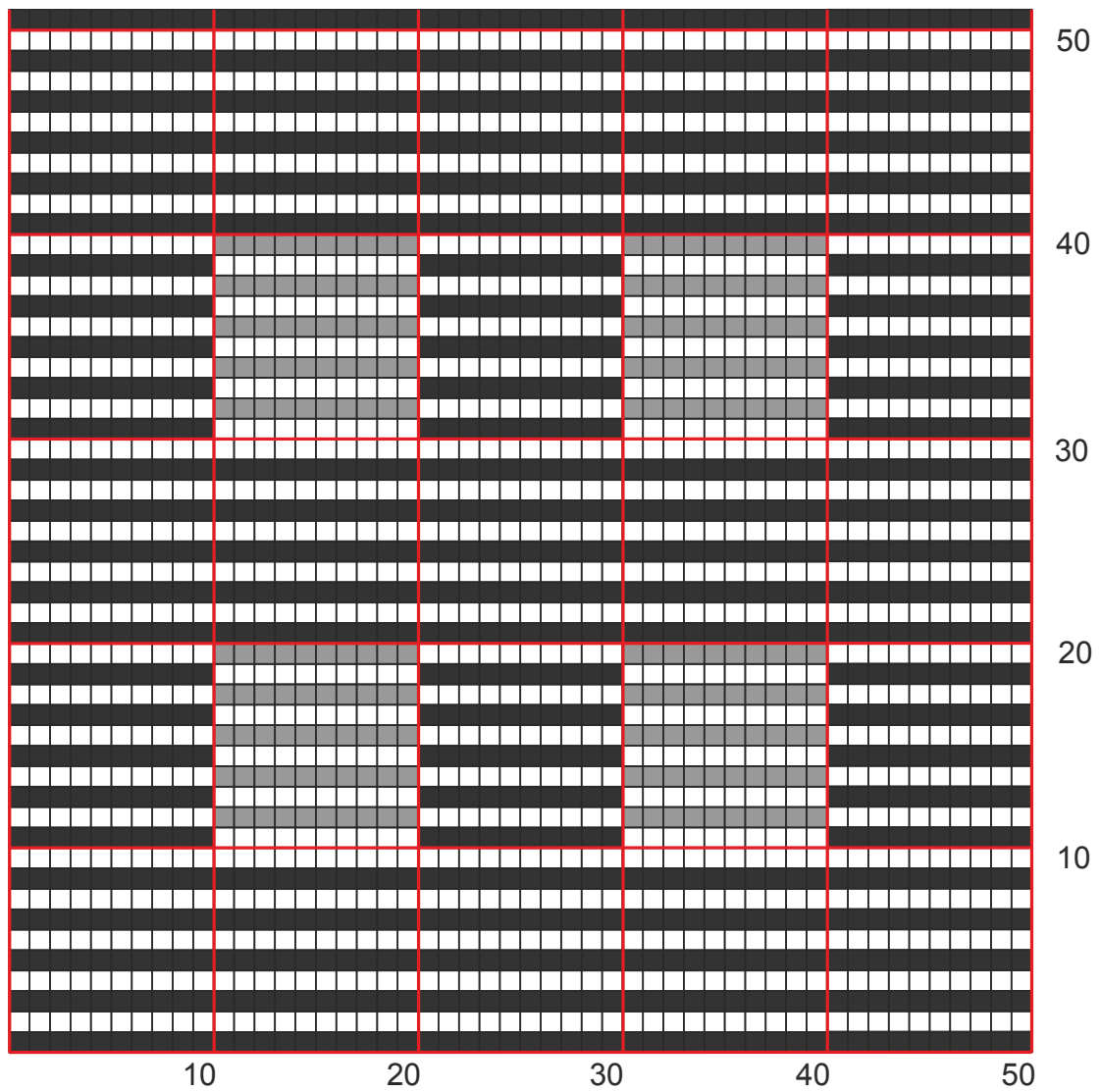
*To neaten the edges*

Turn the work sideways and pick up one stitch from the end of each ridge. Cast off loosely on the next row.

If you would like wider borders, work a few ridges of garter stitch before you begin the chart and end with garter stitch to match. Add the same number of ridges of garter stitch on the sides before casting off.

The photos show what you see when you look from different angles





©Steve Plummer & Pat Ashforth 2015

Woolly Thoughts

166 Keighley Road, Colne, Lancashire, BB8 0PJ, England

[woollythoughts.com](http://woollythoughts.com)

All rights reserved