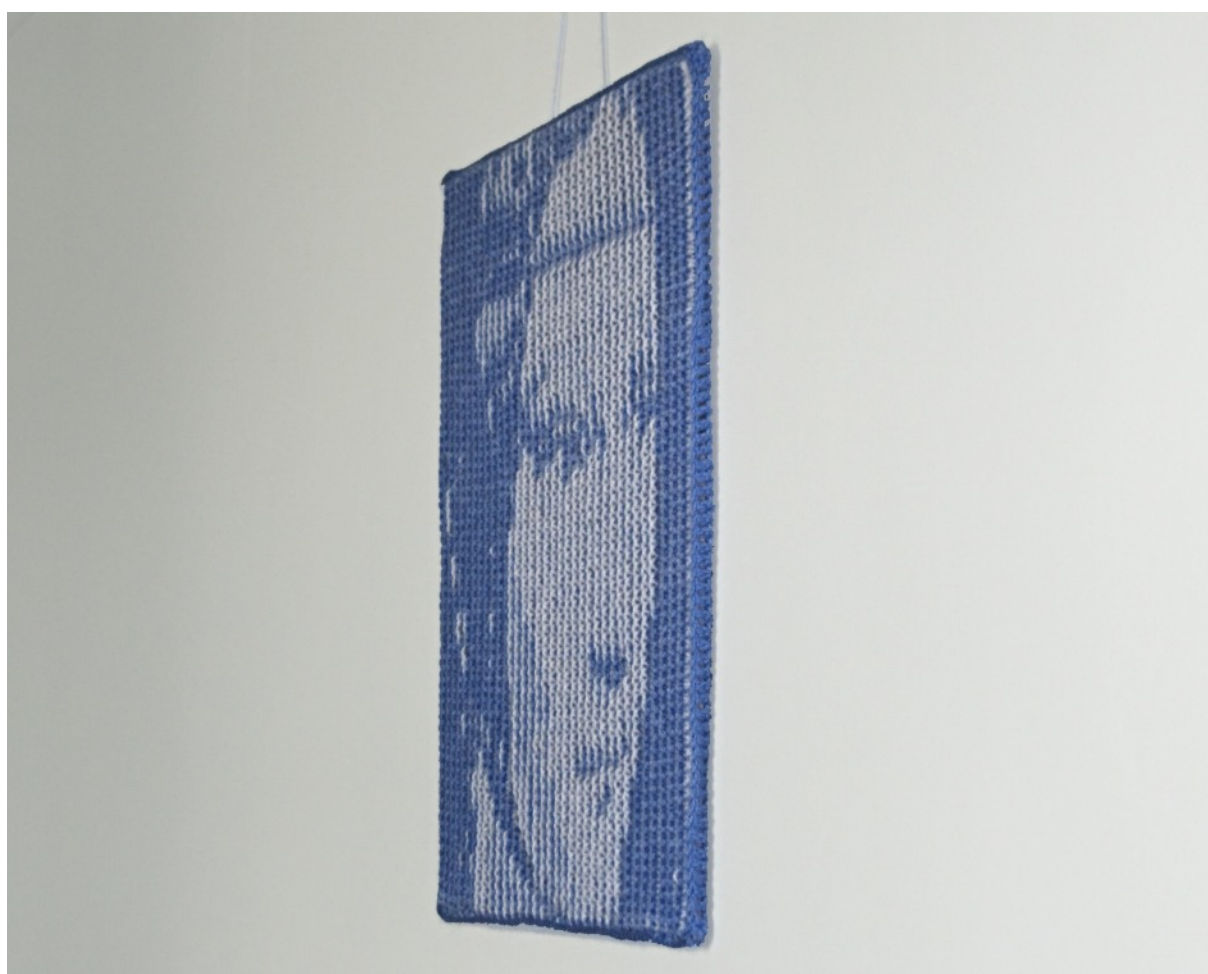


Woolly Thoughts

THE WORLD OF
ILLUSION KNITTING
where nothing is quite what it seems



Lady with an Ermine - Head

*Sample from Lady with an Ermine
designed by*

Steve Plummer & Pat Ashforth

Lady with an Ermine - Head

This pattern is just the head of Lady with an Ermine, based on Leonardo da Vinci's painting of 1490. We separated the head because we wanted to use it in a workshop about some of the design uses of Lego Digital Designer. It might be helpful to anyone wanting to practise the illusion knitting technique.

Yarn

The sample was made in DK yarn. A thicker, or thinner, yarn will change the overall size of the piece but it will not stop the illusion from working.

- 90 metres DK, in each of two contrasting colours (Extra required for border.) I used Bluebell and White.

Needles

The effect works best if the work is tight. Use smaller needles than you would normally use. A wall-hanging can be knitted very tightly, if you wish. I used 3.25 mm needles.

Size

35 cm x 35 cm (14" x 14")

Tension

Slightly more than 5 stitches to the inch, measured on garter stitch, will give the sizes given above

Chart

Because this is a small piece, there is only one printable version of the chart. There is another chart, split into sections, suitable for using on a tablet or phone. (The complete *Lady with an Ermine* is split across several pages.)

The patterns are marked in ridges (not rows!). Ridges and stitches are marked, with red lines, in groups of ten so that you can keep your place on the chart. Use markers on your needle to correspond. There are 67 stitches and 69 ridges (138 rows) of knitting.

There are three colours on the chart but you are only using two colours of yarn.

White on the chart always represents purl stitches. You could be using either colour of yarn to work these stitches. The working colour is determined by the colour of the current ridge. All other coloured stitches are knit stitches. Use your light colour to knit the light grey stitches; use your dark colour to knit the dark grey stitches.

You always work two rows (one ridge) of Light followed by two rows (one ridge) of Dark.

Special note

The right side of the work is always knit. The chart is only needed for wrong-side rows. When you look at the chart you are seeing the right side and need to work from left to right for wrong side rows.

You may find it easier to flip the chart so that you can see the wrong side and you will be working in the same direction as what you see.

Lady with an Ermine - Head - Method

Every stripe on the chart represents two rows of knitting. Every right side row is knit. You only need the chart for the wrong side rows.

Using Light, cast on 67 stitches. (See note on temporary cast-on)

Ridge 1 (Light): Row 1: The cast on row counts as the first row of the first ridge.

Row 2: Follow the chart. (The chart shows all purl.)

Ridge 2 (Dark): Row 1: Knit.

Row 2: Follow the chart. (The chart shows all knit.)

Ridges 3 - 6 Repeat ridges 1 and 2 twice

Ridge 7 (Light): Row 1: Knit

Row 2: Follow the chart. (The chart shows all purl)

Ridge 8 (Dark): Row 1: Knit

Row 2: Follow the chart. Knit the coloured stitches and purl the white stitches.
(The chart shows k26, p11, k5, p9, k16.)

Ridge 9 (Light): Row 1: Knit.

Row 2: Follow the chart. Knit the coloured stitches and purl the white stitches.
(The chart shows p25, k15, p2, k1, p1, k11, p1, k1, p10)

Continue in this way to the end of the chart. Cast off loosely on the second row of the last ridge - unless you intend to add a border.

Temporary cast on

We recommend beginning with a temporary cast on. This is not essential but it does allow you to go back and finish the first side in the same way as the second side.

If you know a method of casting on which matches your cast off, you could make the edges match this way.

Finishing

There are several ways to finish the wall-hanging, depending on how you intend to hang it.

To tidy the edges

The simplest finishing merely tidies the edges. Undo the temporary cast on and cast off to match the other edge. For the top and bottom edges, pick up one stitch from each ridge end and cast off again on the next row.

To add a border

Work in the same way for all four edges, either knitting on to the existing stitches or by picking up stitches as described above.

Next row: Knit into the front and back of the first stitch, knit to the end.

Repeat this row until the border is the width you want. Cast off loosely.

Stitch the mitred corners.

To add a facing

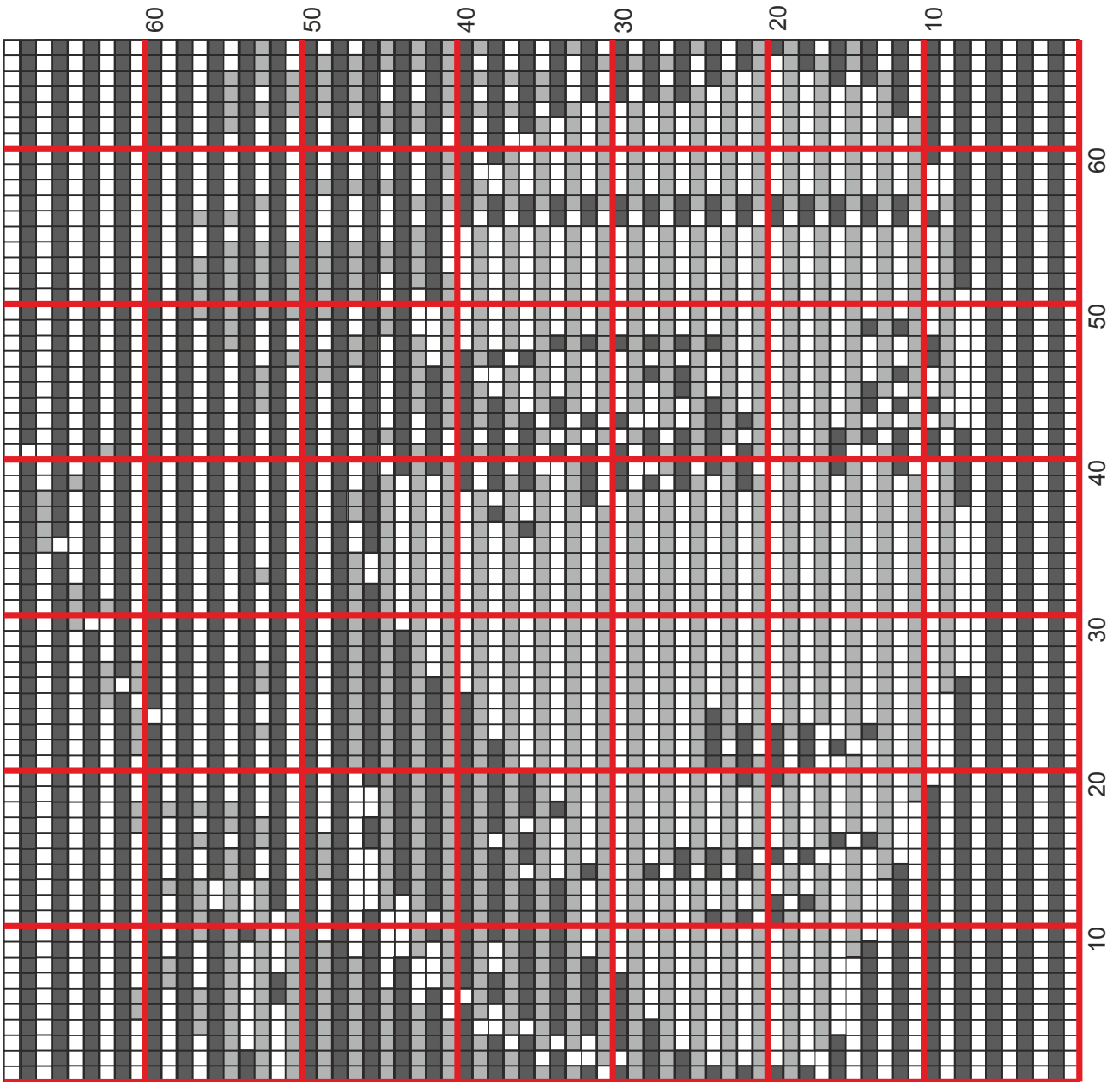
If you want to stretch the knitting over a thin board, you will need a facing on all four sides to keep it in place. Work as for border but do not cast off.

Next row: Knit two together, knit to the end. Repeat this row until you have the width you want. Cast off.

Work all four edges the same. Fold the extra pieces to the inside and stitch all mitred corners.

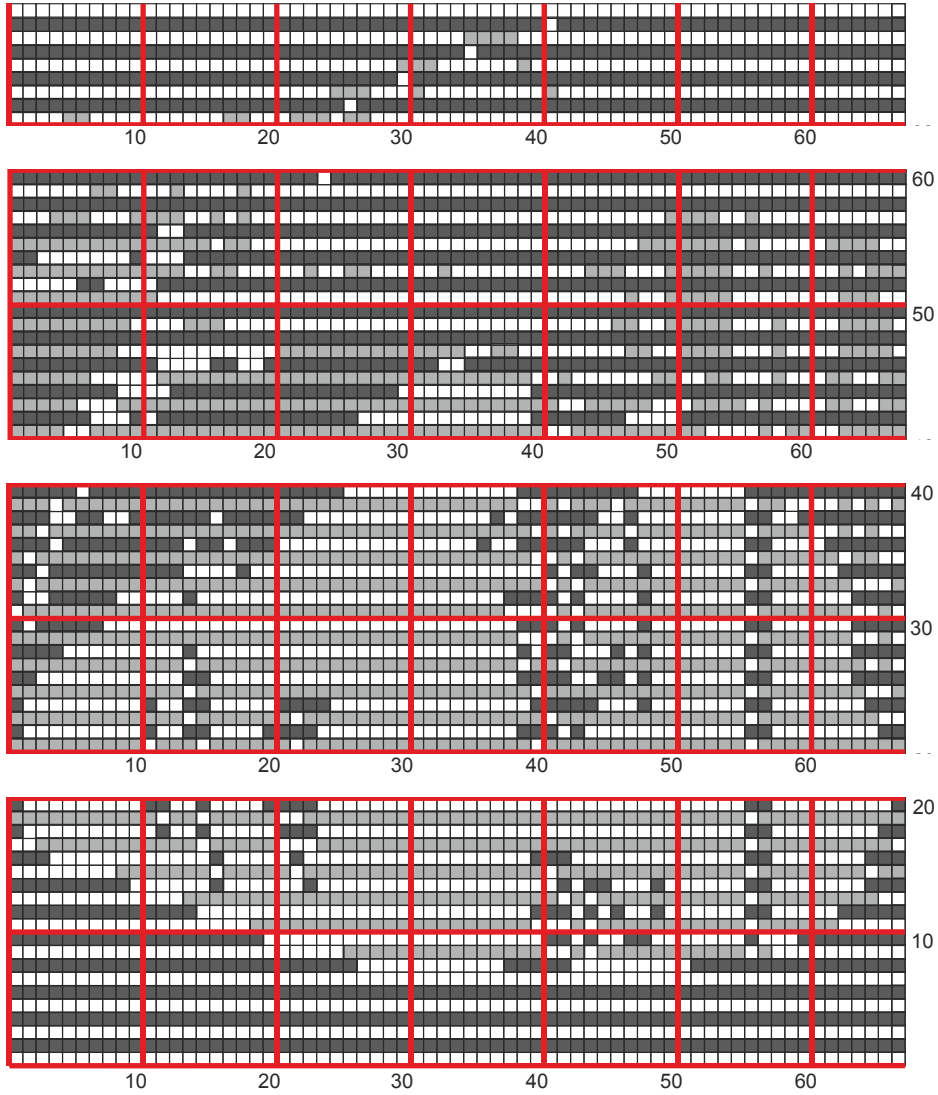
Lady with an Ermine - Head

Turn the page sideways to use the chart.



For tablet users

Use this page on a pdf reader. Enlarge it until you can see a band of twenty ridges and the numbers below. Scroll across when you want to see the rest of the row. Cross out each ridge as you complete it and you will always be able to find your place.





**THE WORLD OF
ILLUSION KNITTING**

where nothing is quite what it seems

©Steve Plummer & Pat Ashforth 2015

Woolly Thoughts

166 Keighley Road, Colne, Lancashire, BB8 0PJ, England

woollythoughts.com

All rights reserved